

Basics

Use *aha!*™ InkWriter™ with SmartInk™ to write and draw the same way you do with a pen and a piece of paper.

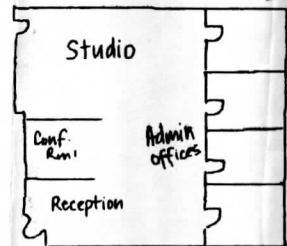
Using SmartInk

To do this	Do this
Write	<ul style="list-style-type: none"> Write within the lines. Skip a line or two before you begin a drawing, and skip a line or two beneath a drawing before you add more writing.
Draw	<ul style="list-style-type: none"> Make the first stroke of a drawing taller than two lines. This tells SmartInk that you're drawing. Selection and editing methods for drawings are different from those for writing.

Writing and drawing

Write within the lines and then edit as if you were using a word processor.

Here is a sketch of Michele's plan. Detailed drawings will follow!



The modular furnishings will work well in the new layout. Michele has suggested some new artwork for

Skip a line after writing, and draw a picture.

Draw bigger than a couple of lines and you can treat the shape as a drawing.

Skip a line after a drawing, and resume writing.

Writing lists

Use a dash to signal InkWriter that you're writing a list.

Go south on Plymouth Road till you come to a stop light (Easy Street). Easy Street is one way here, and there is a left-turn signal.
Turn left on Easy Street. Go straight up the hill. The road winds a lot. Just keep going up.
At the top of the hill, look for a brick building on the right. Turn right into

When you revise an item in a list or change the indentation, the lines rewrap.

Selection

Selection is different for writing and drawing. InkWriter provides special editing methods for each.

Selecting a single word

3. At the top of the hill, look for a brick building on the right. Turn right into the driveway just beyond the brick building. The restaurant is in a field behind the building.

Tap the word. The word turns gray to show that it's selected.

The actual address is 441 Easy Street. There is a big parking lot.

Selecting several words

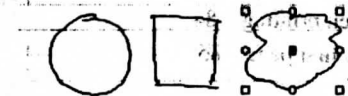
Dress is casual (Alex says it's very casual). Even if our entry doesn't win, we'll have a great dinner! I'm looking forward to the event and hope to see you there.

Press (and hold) just to the left of the first word. When you see a vertical bar, drag to create a selection box as shown.

Dress is casual (Alex says it's very casual). Even if our entry doesn't win, we'll have a great dinner! I'm looking forward to the event and hope to see you there.

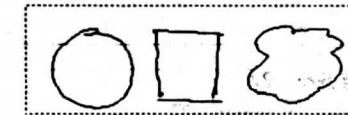
When you lift the pen, the words under the box are grayed to show that they're selected.

Selecting a single drawing object

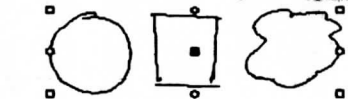


Tap the object. Handles show that the object is selected.

Selecting several drawing objects



Press (and hold) just above and to the left of the first object. When you see a small box, drag to create a selection box as shown.



When you lift the pen, handles surround the objects to show that they're selected.

Editing

Here are some commonly used editing procedures for writing and drawing. For more procedures and more information, refer to the *InkWriter Handbook*.

Editing your writing

To do this	Do this
Delete (erase) a word	<ul style="list-style-type: none">• Draw a cross-out gesture \times over a word or a selected word.
Insert a single space between words, a space the length of a word, a blank line, or five blank lines	<ul style="list-style-type: none">• Draw a caret \wedge gesture where you want to make the insertion. • When the Insert menu opens, choose the item you want.
Open a pop-up pad to add several words of computer text	<ul style="list-style-type: none">• Draw a caret \wedge gesture where you want to insert the text. • When the Insert menu opens, choose Pop-up pad.
Insert the date, time, or date and time	<ul style="list-style-type: none">• Draw a caret \wedge gesture where you want to insert the date or time. • When the Insert menu opens, choose Date, Time, or Date & Time.
Move or copy a selection	<ul style="list-style-type: none">• Use standard PenPoint gestures over the selection (press \downarrow for move, tap press \downarrow for copy).
Translate an ink word into computer text	<ul style="list-style-type: none">• Draw a small circle \circ over (on top of) the word to open an editing pad. • Correct the word if you need to, and tap Y OK to close the pad.
Change existing writing ink or text	<ul style="list-style-type: none">• Draw a check mark \checkmark over a selection. • When the Writing option sheet appears, tap Y the option you want, and then tap Y Apply & Close.
Make selected words bold, underlined, highlighted, italicized, or normal	<ul style="list-style-type: none">• On top of a selection, write a B (for bold), a U (for underline), an H (for highlighted), an I (for italicized), or an N (for normal).
Strike through selected words	<ul style="list-style-type: none">• Draw a flick right — over the selection.
Split a single word into two	<ul style="list-style-type: none">• Draw a down right ┘ between letters, at the point where you want to split the word.

To do this

Join two words into one

Do this

- Tap Y the space between the two words to select the space, and then draw a cross-out \times over the selected space.

Split a paragraph into two

- Draw a down left ┘ over the spot at which you want to break the paragraph.

Join two paragraphs into one

- Draw an up right ┘ over the spot in the line you want to merge into the paragraph above.

Editing your drawings

To do this

Make a selected drawing larger or smaller

Do this

- Drag one of the outside handles outward to make the object larger. • Drag inward to make it smaller.

Rotate a selected drawing

- Drag one of the round handles in a circular motion.

Change existing ink or fill pattern for a selected object

- Draw a check mark \checkmark over a drawing selection. • Tap Y the Ink and Fill settings you want, and tap Y Apply & Close.

Translate a single-stroke, selected drawing into a computer shape

- Choose Translate and Edit from the Edit menu to open a translation menu. In the menu, tap Y the shape you want: Line, Circle, Rectangle, Triangle, Polyline, or Text.

Translate multiple single-stroke, selected drawings into computer shapes

- Choose Translate and Edit from the Edit menu to open a translation menu. In the menu, tap Y Draw Objects.

Select an ink word that is part of a drawing

- Press (and hold) above and to the left of the ink word. When the drawing selection box appears, drag to surround the whole word. When you lift the pen, the word (many strokes) is selected as one object.

Translate a selected ink word into text

- Choose Translate and Edit from the Edit menu. • In the Translate pop-up menu, tap Y Text.

Revise (edit) a word you've translated in a drawing

- Select the word and choose Edit from the Edit menu. A editing pad opens. • Make changes and tap Y OK to close the pad. (You can also use a circle \circ to open the editing pad.)